

Customized Chromatic Harmonica CREMONA : 12Hole/14Hole/16Hole



《Name of “CREMONA”》

“CREMONA” is a name of a small town in Italy where the world famous violins, Stradivarius, were crafted. There are still many workshops of stringed instruments such as violin, viola, and cello. Chromatic harmonica “CREMONA” was named from my strong passion to create impressive harmonicas which produce beautiful sound like violins whose tones have been fascinating many people.

Warm and Profound sound like the woodwind (All Wood Model : AW)

The comb and covers are made of ebony. Ebony is a very dense and heavy wood. That is why CREMONA All Wood Model produces warm and profound sound. Moreover, additional weights are embedded in the comb so that its tones get clear outlines and massiveness. The long and deep acoustic opening at the comb base adds more resonance to its sound.



Profound and brilliant sound (Silver Comb Model : SW)

The comb is made of silver (SV925: sterling silver) and covers are made of ebony. Ebony is a very dense and heavy wood. The combination of silver comb and wood covers produces brilliant sound as well as warm and profound sound. The long and deep acoustic opening at the comb base adds more resonance to its sound.



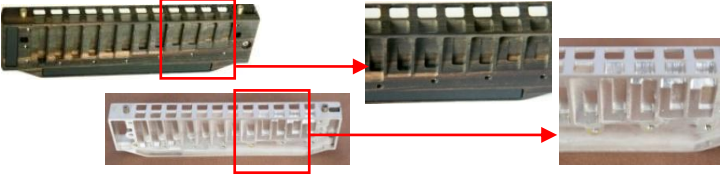
Brilliant and massive sound (All Silver Model : SS)

The comb, covers and mouthpiece are made of silver (SV925: sterling silver). Brilliant sound is a characteristic of the silver model. CREMONA All Silver Model produces profound and massive sound as well. The thickness of CREMONA silver covers has effects to soften the sharp grating sound of high range tones and add warm rich sound. The long and deep acoustic opening at the comb base adds more resonance to its sound.



Careful craft and fine structure realized comfortable play

Each part is made very carefully by carving out or grinding one by one. Delicate and careful work reduces the leak of breath. CREMONA Harmonica makes the most of your breath to produce sound. Fine structure of the comb is designed to offer comfortable play and good control, which satisfies from beginners to advanced players.



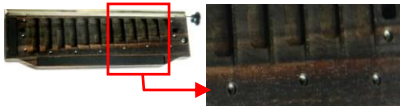
Easy maintenance

Mouthpiece parts can be easily detached and attached because of a special mechanism of its screw parts. It is helpful when you remove and clean mouthpiece parts after playing. It is also easy for you to do tuning and changing reeds or wind savers because each reed plate is fixed by screws separately.



Long lasting

Some people think that wooden harmonica does not function well for a long time. The wood comb of CREMONA Harmonica is made of very dense wood, so it hardly absorbs water and it keeps its right shape for a long time. Thread grooves are braced with metal, which helps them to endure frequent screw work. Those features make CREMONA Harmonica to be durable even if it is made of wood.



Product Line-up : 12Hole

Model Name/Price (without tax)	Specifications
<div style="background-color: #4F8127; color: white; padding: 2px; display: inline-block;">12Hole: AW48</div> Price: 320,000 Yen 	<ul style="list-style-type: none"> • Range: 12Holes, 48scales, c1~d4 • Comb: Curved out from solid ebony • Acoustic opening • Cover: Curved out from solid ebony • Mouthpiece: Silver (SV925) <ul style="list-style-type: none"> • Slide lever: Stainless steel • Slide lever knob: Curved out from solid ebony • Dimensions: 158 × 46 × 34 mm • Weight: 310 g • Case: Curved out from solid walnut
<div style="background-color: #4F8127; color: white; padding: 2px; display: inline-block;">12Hole: SW48</div> Price: 440,000 Yen 	<ul style="list-style-type: none"> • Range: 12Holes, 48scales c1~d4 • Comb: Silver (SV925) • Acoustic opening • Cover: Curved out from solid ebony • Mouthpiece: Silver (SV925) <ul style="list-style-type: none"> • Slide lever: Stainless Steel • Slide lever knob: Silver (SV925) • Dimensions: 158 × 46 × 34 mm • Weight: 520 g • Case: Curved out from solid walnut
<div style="background-color: #4F8127; color: white; padding: 2px; display: inline-block;">12Hole: SS48</div> Price: 540,000 Yen 	<ul style="list-style-type: none"> • Range: 12Holes, 48scales c1~d4 • Comb: Silver (SV925) • Acoustic opening • Cover: Silver (SV925) • Mouthpiece: Silver (SV925) <ul style="list-style-type: none"> • Slide lever: Stainless Steel • Slide lever knob: Silver (SV925) • Dimensions: 158 × 46 × 33 mm • Weight: 660 g • Case: Curved out from solid walnut

Product Line-up : 14Hole

Model Name/Price (without tax)	Specifications
<div style="background-color: #8B4513; color: white; padding: 2px; display: inline-block;">14Hole: AW56</div> Price: 340,000 Yen 	<ul style="list-style-type: none"> • Range: 14Holes, 56scales, g~d4 • Comb: Curved out from solid ebony • Acoustic opening • Cover: Curved out from solid ebony • Mouthpiece: Silver (SV925) <ul style="list-style-type: none"> • Slide lever: Stainless steel • Slide lever knob: Curved out from solid ebony • Dimensions: 176 × 46 × 34 mm • Weight: 340 g • Case: Leather
<div style="background-color: #8B4513; color: white; padding: 2px; display: inline-block;">14Hole: SW56</div> Price: 460,000 Yen 	<ul style="list-style-type: none"> • Range: 14Holes, 56scales, g~d4 • Comb: Silver (SV925) • Acoustic opening • Cover: Curved out from solid ebony • Mouthpiece: Silver (SV925) <ul style="list-style-type: none"> • Slide lever: Stainless steel • Slide lever knob: Silver (SV925) • Dimensions: 176 × 46 × 34 mm • Weight: 630 g • Case: Leather

Product Line-up : 16Hole

Model Name/Price (without tax)	Specifications
<div style="background-color: #A52A2A; color: white; padding: 2px; display: inline-block;">16Hole: AW64</div> Price: 320,000 Yen 	<ul style="list-style-type: none"> • Range: 16Holes, 64scales, c~d4 • Comb: Curved out from solid ebony • Acoustic opening • Cover: Curved out from solid ebony • Mouthpiece: Brass (Gold plated) <ul style="list-style-type: none"> • Slide lever: Brass (Gold plated) • Slide lever knob: Curved out from solid ebony • Dimensions: 196 × 47 × 36 mm • Weight: 420 g • Case: Leather
<div style="background-color: #A52A2A; color: white; padding: 2px; display: inline-block;">16Hole: SW64</div> Price: 520,000 Yen 	<ul style="list-style-type: none"> • Range: 16Holes, 64scales, c~d4 • Comb: Silver (SV925) • Acoustic opening • Cover: Curved out from solid ebony • Mouthpiece: Brass (Gold plated) <ul style="list-style-type: none"> • Slide lever: Brass (Gold plated) • Slide lever knob: Curved out from solid ebony • Dimensions: 196 × 47 × 36 mm • Weight: 740 g • Case: Leather

※Listed prices are as of April 2016 ※Prices and specifications may change without prior notice .
 ※Surface varies due to natural wood.